



The NASA Western Water Applications Office (WWAO)

Annual Meeting - Program Updates, April 30, 2024

Stephanie Granger, Manager, NASA WWAO

Stephanie.L.Granger@jpl.nasa.gov



WATER
RESOURCES



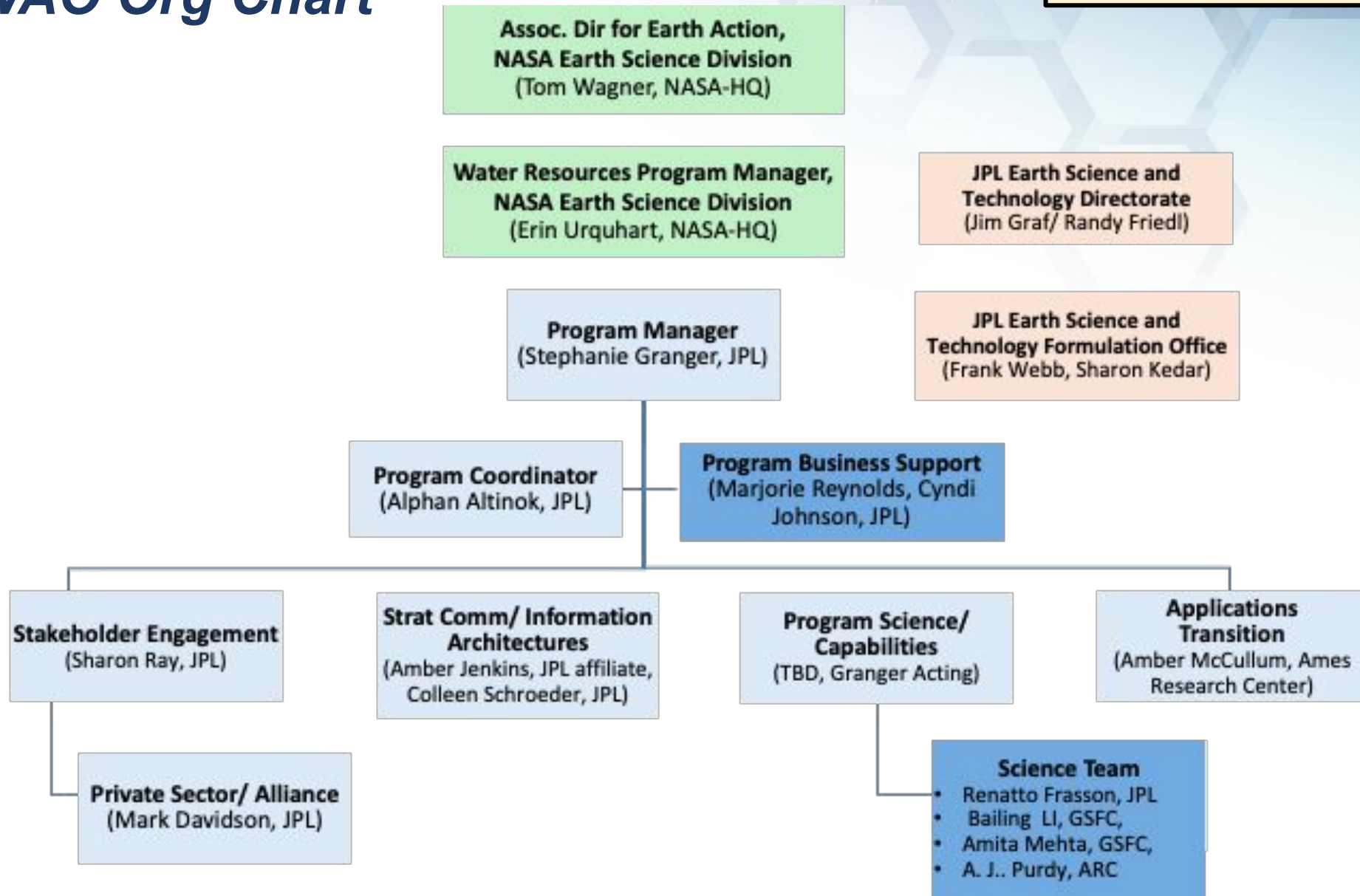
NASA's Western Water Applications Office

Mission: **Directly benefit water management in the Western United States by getting NASA data, models, analyses, and tools into the hands of decision makers.**

- Convenes regional water management communities to collectively **identify** gaps and needs
- Increases access and use of NASA Earth Observations (data) for decision-making by **connecting** NASA's Earth science capabilities with water management gaps.
- **Transitions** mature projects to operational use for sustained use and **impact**


WWAO Org Chart

The NASA WWAO is part of the Earth Science to Action Water Resources Program



WWAO has brought together a Multi-Center NASA team with a unique set of skills needed to identify needs, vet potential NASA capabilities, and create connections from within NASA to the Western water management community


The WWAO Team




Stephanie Granger(JPL)
Program Manager




TBD
Program Scientist



Alphan Altinok (JPL)
Program Coordinator



Sharon Ray (JPL)
Public Sector Engagement



Amber McCullum (ARC)
Applications Transition/ Impact



Mark Davidson (JPL)
Private Sector Engagement



Amber Jenkins (JPL)
Information Architectures



Colleen Schroeder(JPL)
Strategic Communications

Renato Frasson (JPL)
Bailing Li (GSFC),
Amita Mehta (GSFC),
AJ Purdy (ARC)
Science Team

Regional Perspective – Major River Basins

- Conduct water management studies and needs assessments for major western US basins
 - Eight major basins in the western US, roughly west of the 100th meridian
- 7 Basins Studied
 - Upper and Lower Colorado River Basin
 - Columbia River Basin
 - Rio Grande Basin
 - Missouri River Basin
 - California
 - **In progress:** Arkansas-White-Red River Basin





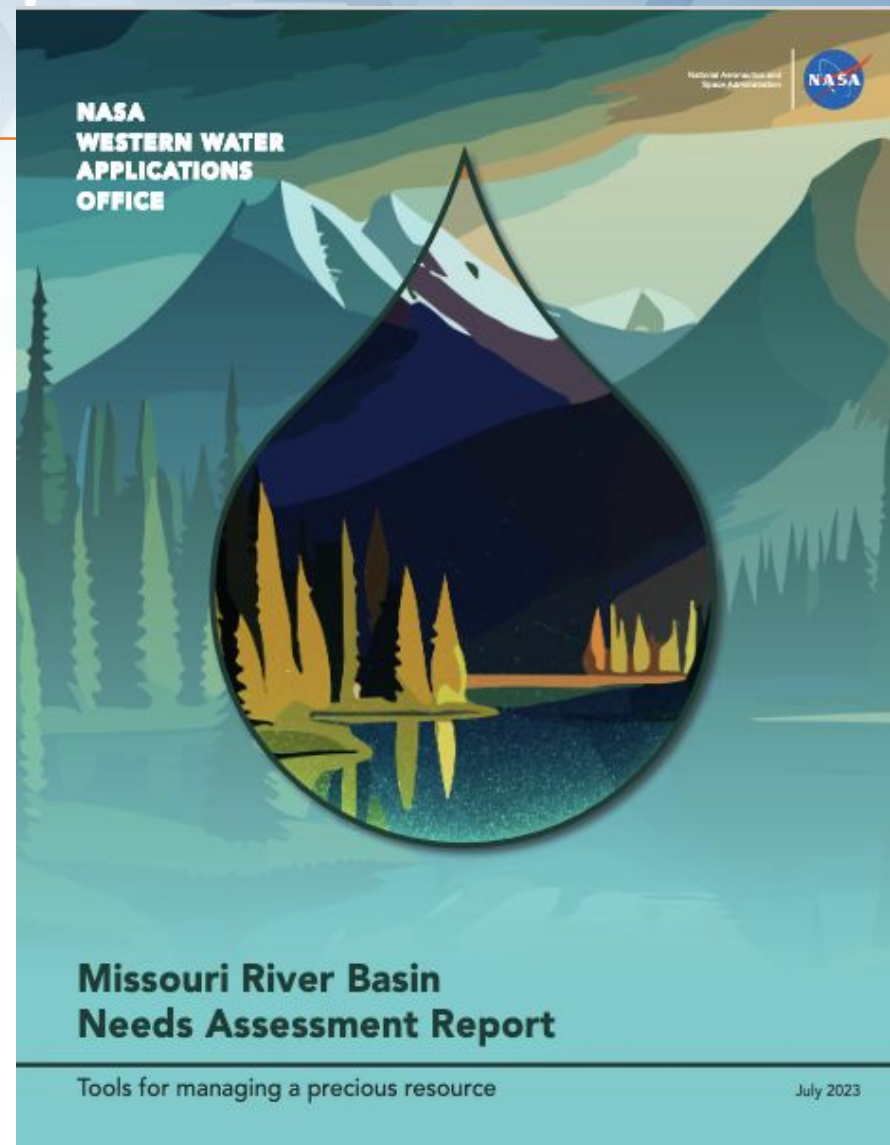
Looking Back at 2023 – Results and Progress

Three Big Results

1. Missouri River Basin Needs Assessment Published
 - 21 needs identified
2. Successful completion of all 5 Columbia River Basin Projects
3. Publication of a Request for Information (RFI) for the Rio Grande Basin
 - 7 Projects selected – contracting in process

Progress

- Arkansas-White-Red Basin Characterization Study Completed
- Private Sector partnerships gaining steam
- Two last mile projects underway – CO, NM
- WWAO Water Portal launched
 - Online Knowledge Exchange Platform for water managers and scientists to exchange partner needs and solutions





Coming up soon

Identify

Arkansas-White-Red Needs Assessment	June 2024
Private Sector Engagement	Ongoing
Cross-Basin Synthesis	Summer/Fall 2024
Launch Great Basin Study	Fall 2024
Water Practitioners Work Group	2024

Connect

Rio Grande Projects Kicked Off	Imminent - Selections made, getting on contract
Private Sector Projects	Initial project expected to launch in 2024
Missouri River Basin RFI Published, Projects Selected	June 2024, October 2024

Transition

Research to Decisions White Paper	Fall 2024
Final Mile projects	Two projects underway - CO, NM

Knowledge Exchange

Connect the Drops Webinar Series	Kick-off July 2024
----------------------------------	--------------------

Looking Forward to Earth Action

User Centric

- WWAO will continue its “user-needs driven”, bottom-up approach to identify and address critical information gaps in the western US.
- Continue co-development of projects and sustained engagement with key practitioners and partners.

Scale

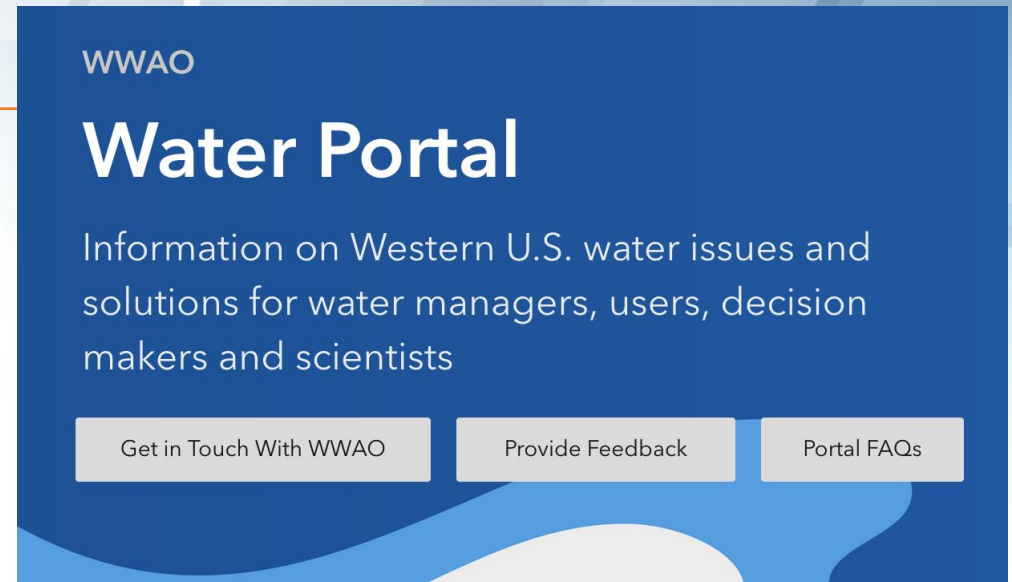
- Prioritize a cross-basin synthesis and assessment to identify opportunities to scale projects and tools
- Identify pathways to advance inter-agency partnerships for project development and transition to sustained use

Building Bridges

- Encourage teaming and networking within the western water management community, the private sector, academia, and NASA to collectively address needs and increase the useability of NASA capabilities



For more information



- Visit our **NASA-WWAO Website** and Portal:

- <https://wwao.jpl.nasa.gov/>
- <https://wwao.jpl.nasa.gov/portal/>

- Reach out to our NASA-WWAO Team

- **Stephanie Granger**, Program Manager: stephanie.l.granger@jpl.nasa.gov
- **Alphan Altinok**, Program Coordinator: alphan.altinok@jpl.nasa.gov
- **Sharon Ray**, Engagement Lead: sharon.ray@jpl.nasa.gov
- **Amber Jenkins**, Information Architect/Strategic Communication Lead: amber.h.jenkins@jpl.nasa.gov
- **Amber McCullum**, Impact/Transition Lead: amberjean.mccullum@nasa.gov

Significant Achievements



Identify

4 needs assessments completed

7 western basins / watersheds studied

60+ Use Cases documented

150+ participants in workshops / surveys

Connect



5 award rounds

15 completed projects

2 active projects – CO & NM

7 new projects - Rio Grande

40+ project partners

20+ papers/articles on project results

Private sector pathfinder

Transition



5 capabilities transitioned

1 new company formed – ASO, Inc.

1 Research to Operations Workshop

2 Interagency Research to Operations publications

3 impact assessments